

Hitachi ZW140-6 Wheel Loader

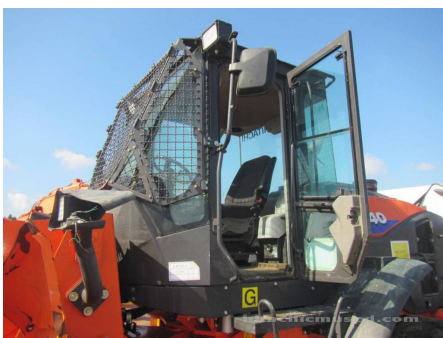
Basic information			
Inspection date	20211029	Model	ZW140-6
Product category	Wheel Loader	Manufacturer	Hitachi
Serial No.	10196	Working hours	12058 hours
Year of manufacture		Engine No.	
Price			
Country	Japan	Yard Location	Sakura
Dealer	Hitachi Construction Machinery Japan Co., Ltd.	Dealer	
Detail Information			
Job Status	Industrial Waste Disposal, Forestry	Mileage (km)	30374
Type of Tire	Normal	License Plate	No
Documents	Unknown	Cabin / Canopy	Cabin
Cabin Type	ROPS	Power Transmission System	HST
Drive System	All Wheel Drive	Size of Tire	17.5-25
Bucket Attachment	Loading BK, Long Reach	Other	EPA, Air Conditioner, Ride Control
Appearance			
Main Frame	Cracked	Front Frame	Good Condition
Counter Weight	Scratched	Cabin	Good Condition
Door	Good Condition		
Interior			
Cabin Interior	Good Condition	Seat	Dirty
Console	Good Condition	Air Conditioner	Malfunction
Operation			
Engine	Required to Repair	Exhaust Gas Color	Normal
Traveling	Normal	HST Motor	Normal
Front Attachment	Normal	Pump Device	Normal
Steering	Normal	Break	Normal
Side Break	Normal		
Front & Pins			
Lift(Push)Arm	Cracked	Bellcrank	Normal
Wear: Front Pins & Bushings	Slight	Wear: Bucket Pins & Bushings	Moderate / within Service Limit
Wear: Center Pins	Slight	Wear: Bucket Side Plate	Moderate / within Service Limit
Wear: Bucket Lip	Moderate / within Service Limit	Wear: Bucket Bottom Plate	Moderate / within Service Limit
Wear: Tooth / Cutting Edges	Moderate / within Service Limit		
Undercarriage / Chassis / Tires			
Scratches: Tire (Front-Right Wheel)	Excessive / Required to replace	Wear: Tire (Front-Right wheel)	Excessive / Required to replace
Scratches: Tire (Front-Left Wheel)	Excessive / Required to replace	Wear: Tire (Front-Left Wheel)	Excessive / Required to replace
Scratches: Tire (Rear-Right Wheel)	Moderate / within Service Limit	Wear: Tire (Rear-Right Wheel)	Excessive / Required to replace
Scratches: Tire (Rear-Left Wheel)	Excessive / Required to replace	Wear: Tire (Rear-Left Wheel)	Excessive / Required to replace
Oil Leak: Axle	No	Oil Leak: Differential Gear Case	No

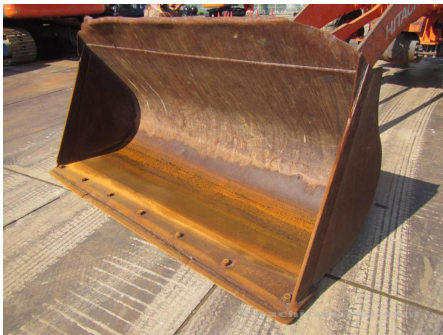
Oil / Water / Air Leakage			
Oil Leak: Front Pipes	None	Oil Leak: Lift Cylinder (Right)	None
Oil Leak: Lift Cylinder (Left)	Moderate Oozing	Oil Leak: Bucket Cylinder	None
Oil Leak: Steering Cylinder	None	Oil Leak: Engine	Slight Film
Oil Leak: Oil Cooler	None	Leak: Radiator	None
Leak: Cooling Pipes	None	Oil Leak: Fuel System	None
Compressor	Normal	Oil Leak: Control Valve	None
Oil Leak: Low Pressure Pipes	None	Oil Leak: High Pressure Pipes	None
Oil Leak: Pilot Pipes	None	Oil Leak: Pilot Valve	Slight Film
Oil Leak: Pump Device	None	Oil Leak: Transmission / Torcon	Slight Film

Overall Rating			
Appearance Evaluation	Fair	Rust / Corrosion	Slight
Overall Rating	Fair		

Special Notes

??????????
 ??????????(17.5-25?
 ??????????????
 ??????????????
 ???????????20Km/h)
 ?????????????????????????????????(?????)?????????????
 ??????????
 ?????????(???)
 ??
 ??
 ??
 ?????????
 ??????????
 ?????????????(?????????????????)
 ??????????????
 ??????????????
 ??????????????
 ??????????????
 ??????????????
 ?????????
 ?????????
 ??????????
 ?????????(?????????????????)





Model	Fuel Rate at adv.	HP/kW	max/alt	104
140 / 104 at 2200 rpm	Family	CELD4: 5AWH	FSTD/FEL	EPA
ELECTRONIC	Category	25	130 kW / 180	
272 / 14.5	E.C.S.	500 POC: DDT, TC	PH	
ENGINE COMPLIANT WITH U.S., EPA AND CALIFORNIA REGULATIONS FOR SULPHUR DELEGATED ASSEMBLY				

