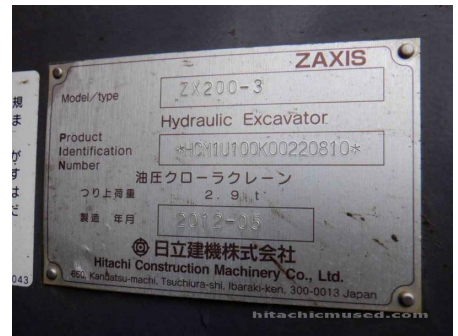
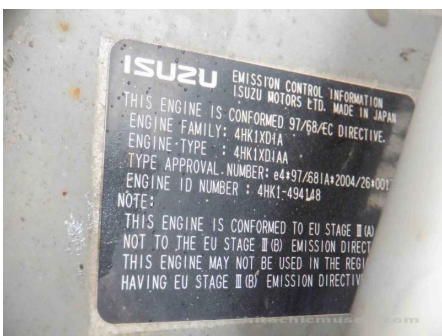
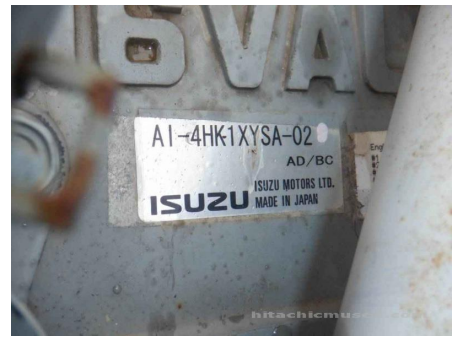


2012 Hitachi ZX200-3 Hydraulic Excavator

Basic information			
Inspection date	2023/12/21	Model	ZX200-3
Product category	Hydraulic Excavator	Manufacturer	Hitachi
Serial No.	220810	Working hours	10306 hours
Year of manufacture	2012	Engine No.	
Price			
Country	MIDDLE EAST	Yard Location	Hitachi Construction Machinery Middle East (Jebel Ali Free Zone)
Dealer	HMEC	Dealer	
Overall Rating			
Special Notes	BK,800G,CAB,A/C,HRV,M/L		





ISUZU EMISSION CONTROL INFORMATION
 ISUZU MOTORS LTD. MADE IN JAPAN
 THIS ENGINE IS CONFORMED 97/68/EC DIRECTIVE.
 ENGINE FAMILY: 4HK1XD1AA
 ENGINE TYPE: 4HK1XD1AA
 TYPE APPROVAL NUMBER: e4*97/681A*2004/26*001
 ENGINE ID NUMBER: 4HK1-494148
 NOTE:
 THIS ENGINE IS CONFORMED TO EU STAGE II (A),
 NOT TO THE EU STAGE II (B) EMISSION DIRECTIVE.
 THIS ENGINE MAY NOT BE USED IN THE REGION
 HAVING EU STAGE II (B) EMISSION DIRECTIVE.

ISUZU 型式标准达到国家第II阶段
 非道路移动机械用柴油发动机排放标准
 系族名称: G20097L05191XA
 发动机型号: 4HK1-XD1AA-01-C2
 发动机功率: 128.4 kW / 2000 r/min
 制造厂名称: 五十铃汽车公司
 生产日期: 2012/03
 功率段: 75 ≤ kW < 130
 型式核准号: CN FC G2 0097 14 0001
 发动机编号: 4HK1-494148 CN4H03

EMISION CONTROL INFORMATION
 ISUZU MOTORS LTD. MADE IN JAPAN
 97/68/EC DIRECTIVE.
 4HK1-494148
 CONFORMED TO EU STAGE II (A),
 NOT TO THE EU STAGE II (B) EMISSION DIRECTIVE.
 THIS ENGINE MAY NOT BE USED IN THE REGION
 HAVING EU STAGE II (B) EMISSION DIRECTIVE.
 TR4H02

AI-4HK1XYSA-02
 AD/BC
ISUZU ISUZU MOTORS LTD.
 MADE IN JAPAN

